

A Study of Public rights of way within Little Dunmow Parish

This Study has been carried out to give evidential support for observations and policies in the Little Dunmow Neighbourhood plan. Use was made of the Uttlesford interactive PROW map <https://www.uttlesford.gov.uk/article/5065/Public-Rights-of-Way>

The following Criteria were used to rate each right of way

Connectivity - the extent that the footpath links to other communities or other footpaths 0-5

Popularity - How busy the footpath is 0-5

Accessibility and surface condition - How adversely effected vegetations or poor underfoot conditions. 0-5

Scenic value - views of surrounding countryside, woodland, distant villages. 0-5

Tranquility - Some paths are affected by traffic noise

Wildlife Habitat - The chance of seeing, deer, hares, rabbits, badgers and birdlife 0-5

Hazards - Some footpaths cross busy roads.

On each map, either end of the right of way has been marked with the ordinance survey grid reference and the 'What 3 Word' position to aid prospective walkers.

All information is believed to be correct as of 1st April 2024

Little Dunmow Footpath 3



Route

From B1256 opposite Homelye lane, south across an arable field until it meets the A120 where it turns East to Station rd North of the A120 flyover.

Key Features

Nothing of note.

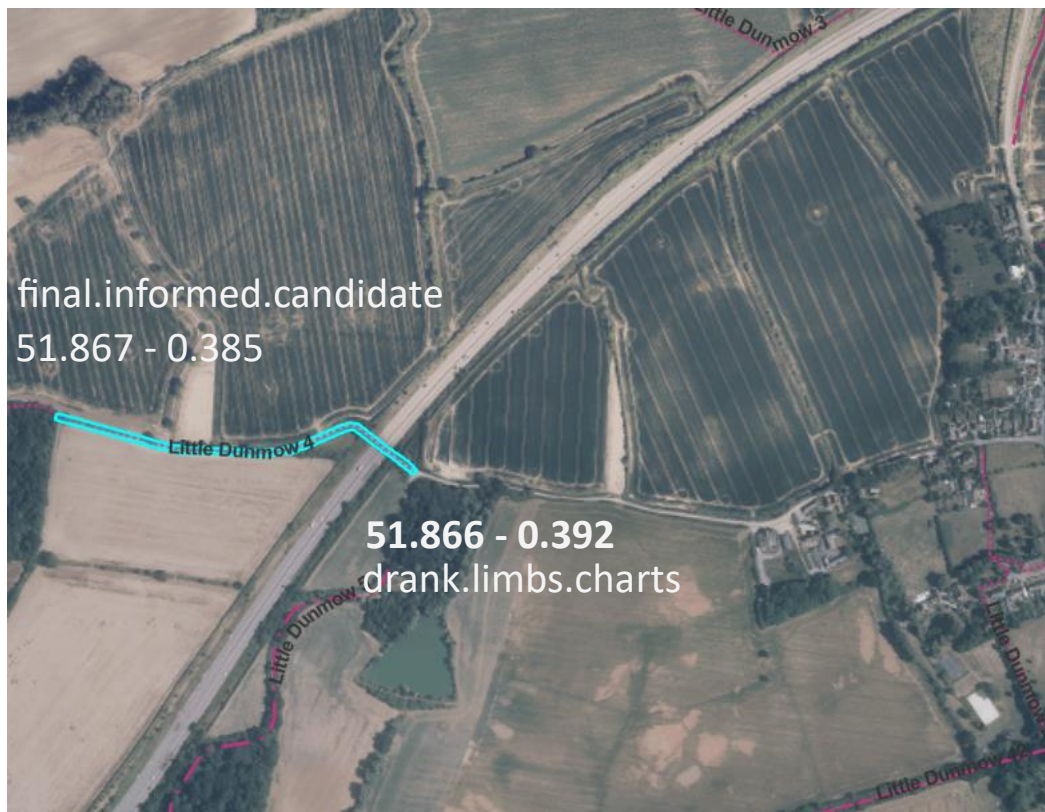
Condition Rating

Poor condition - overgrown with underuse - Access onto the B1256 can be hazardous due to fast moving traffic and no pavement. Noisy

Connectivity **0**, Popularity **0**, Accessibility **2**, Scenic Value **0**, Tranquility **0**, Wildlife **2**, Hazards **-4**

Total **0**

Little Dunmow Footpath 4



Route

Grange Lane to Bumpsted Hill. The footpath passes over the A120 heading North West. It leaves the Parish at Bumpsted woods where it becomes footpath Great Dunmow 66

Key Features

Designated as the Saffron way Long distance walk, Follows a farm track which passes over the A120 dual carriageway up to Bumpstead Hill, used as a walking route to Great Dunmow avoiding roads. Good views across the Chelmer valley to Great Dunmow. The open Fields and and woodland give a good chance of seeing deer, hares and wild birds.

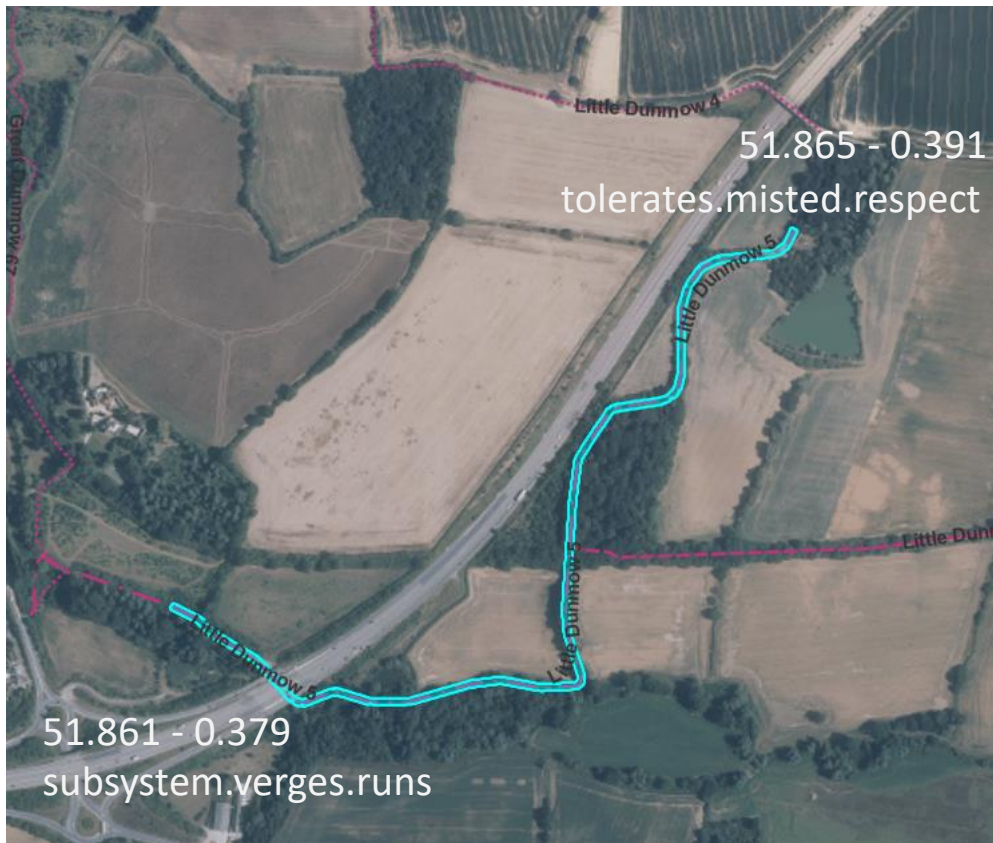
Condition Rating

Good walking surface. Signage could be improved. It does suffer from traffic noise.

Connectivity **4**, Popularity **2**, Accessibility **4**, Scenic Value **3**, Tranquility **2**, Wildlife **3**, Hazards **0**

Total **18**

Little Dunmow By-Way 5



Route

From Clobbs Cottage the end of Grange Lane the by-way curves it's way between the A120 and woodland, slowly heading downhill into the river Chelmer valley. It becomes the Flitch Way when it passes under a disused railway bridge and descends further into the valley until it meets the river Chelmer. Following the riverbank upstream it passes under the A120 to meet Great Dunmow foot-path 57.

Key Features

This is a well used route with good connectivity to other footpaths including the Flitch Way. Running through woods and alongside the river Chelmer there is an abundance of wildlife habitats. There are good views across the Chelmer Valley just after the disused rail bridge. Well used for recreational and dog walkers.

Condition Rating

Surface is generally good but suffers with ruts and mud in poor weather. Beware, this By-way can be used by motorised vehicles. and suffers from traffic noise.

Connectivity **4**, Popularity **3**, Accessibility **3**, Scenic Value **4**, Tranquility **2**, Wildlife **3**, Hazards **-2**

Total **17**

Little Dunmow 8



Route

From FP40 just South of the A120, past Blatches Farm, across the Flitch way at Bouchiers, to meet up with FP 16 at Stebbing Brook.

Key Features

This is a route of an ancient path that went between Stebbing and Felsted. It also gives good access to Felsted and Stebbingford from the Flitch Way with excellent views across the Stebbing Brook Valley. The open countryside is an ideal habitat for wild birds.

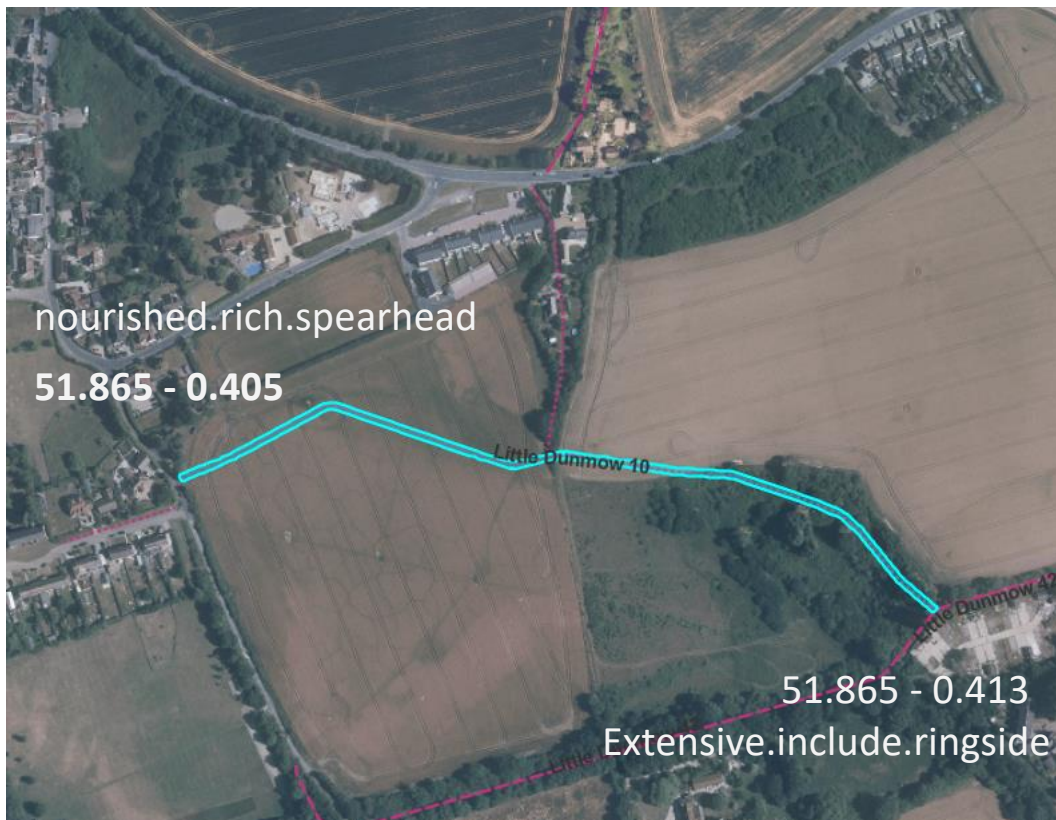
Condition Rating

Average surface - well used for recreational walkers and dog walkers. Suffers from poor drainage as it approaches Stebbing brook and is less used in Winter.

Connectivity **4**, Popularity **2**, Accessibility **2**, Scenic Value **4**, Tranquility **4**, Wildlife **3**, Hazards **-1**

Total **18**

Little Dunmow 10



Route

From Brook Street near it's junction with St Mary's Place the footpath heads East where it is met by footpath LD35 as it continues towards the Flitch Way.

Key Features

Very little use at present but new development at Moors Field will make this a popular route for the new residents to access the recreation park.

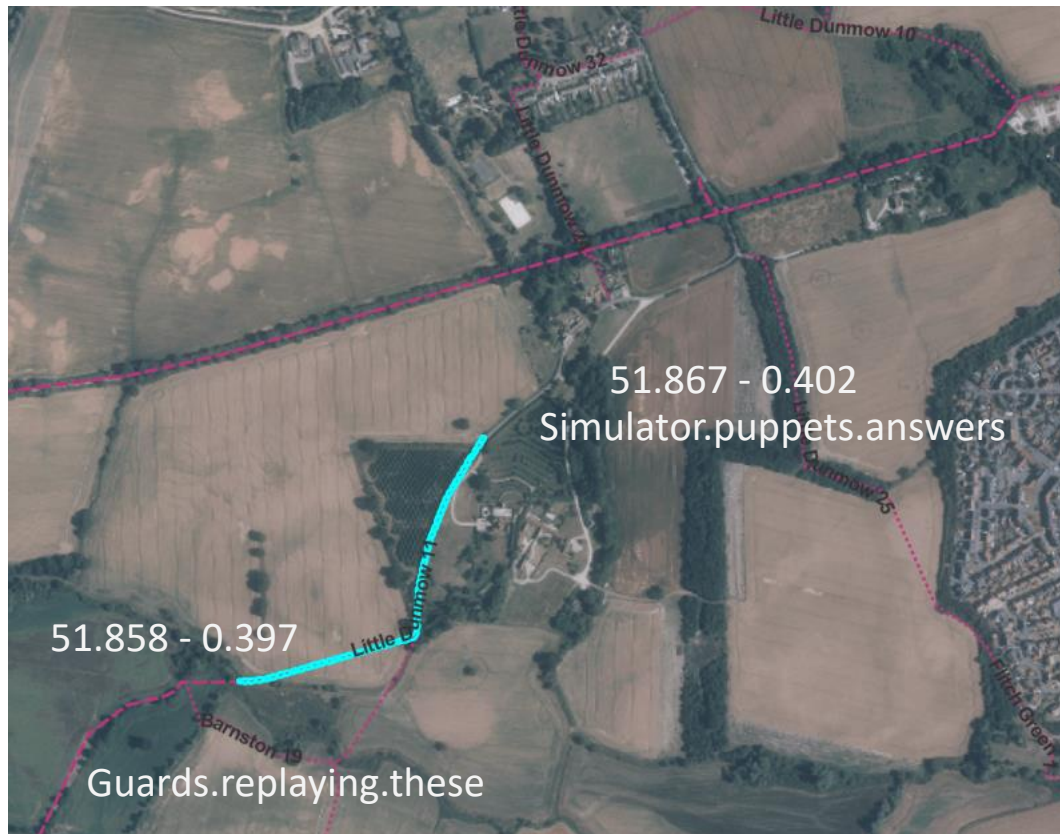
Condition Rating

Poor - overgrown with underuse,

Connectivity **0**, Popularity **0**, Accessibility **1**, Scenic Value **2**, Tranquility **2**, Wildlife **2**, Hazards **-1**

Total **6**

Little Dunmow footpath 11



Route

From the end of Brook street adjacent to the Brick house gate the path passes South between a tree plantation and the Brick house garden to emerge into open countryside. Now heading South West it passes through arable farmland to the banks of the river Chelmer opposite footpath Barnston 1. Although there is no river crossing here, about half way along its length, FP34 begins which leads to a footbridge over the river.

Key Features

This footpath starts by running between a Beech hedge and a conifer plantation before opening out to offer excellent views across the Chelmer Valley, where it is not unusual to see hares or a herd of deer. After its junction with FP 34 it runs across an arable field to the banks of the river Chelmer. This part of the footpath is rarely used due to being a dead end

Condition Rating

Good up until the start of FP34 although poor drainage at the Brook Street end makes it difficult to use in Winter. After its junction with FP34 it is rarely used and poorly signed, therefore difficult to see in the arable field.

Connectivity **3** , Popularity **3** , Accessibility **1** , Scenic Value **4** , Tranquility **4** , Wildlife **4** , Hazards **-1**

Total **18**

Little Dunmow footpath 13



Route

Starting as Felsted 112 from Stebbing rd near the Flitch way road bridge it becomes LD13 when the path crosses the Parish boundary which is Stebbing Brook. Then while heading South West it is joined by LD8 which connects with the Flitch Way near Bouchiers Farm. A Little further on there is a bridge over the Brook which Takes Felsted path 54 to Felsted village. LD13 continues South West to meet Station Rd near the Tanton Road entrance to Flitch Green.

Key Features

This footpath is bordered by Stebbing Brook and mature hedges on one side and open fields on the other, it offers good views of Felsted village and of the Flitch way. This footpath gives residents of Flitch Green a good access to the wider footpath network. The brook is a good habitat for wild birds and insects.

Condition Rating

The Footpath is well used and the bridges are in good condition although under-foot it can be boggy if Stebbing Brook is in flood. Care must be taken at the Station road exit due to fast moving traffic and no pavement.

Connectivity **4** , Popularity **3** , Accessibility **2** , Scenic Value **3** , Tranquility **3** , Wildlife **3** , Hazards **-3**

Total **15**

Little Dunmow footpath 15



Route

From Station rd on the Northern approaches to Little Dunmow village, this footpath heads West to join Bridleway LD31 known as Clay lane.

Key Features

This footpath starts by closely bordering a residential property on Station Road and then runs across open farmland to join LD31, which runs along the hedge-line on the opposite side of the field. The hedge gives a habitat for wild birds and small mammals.

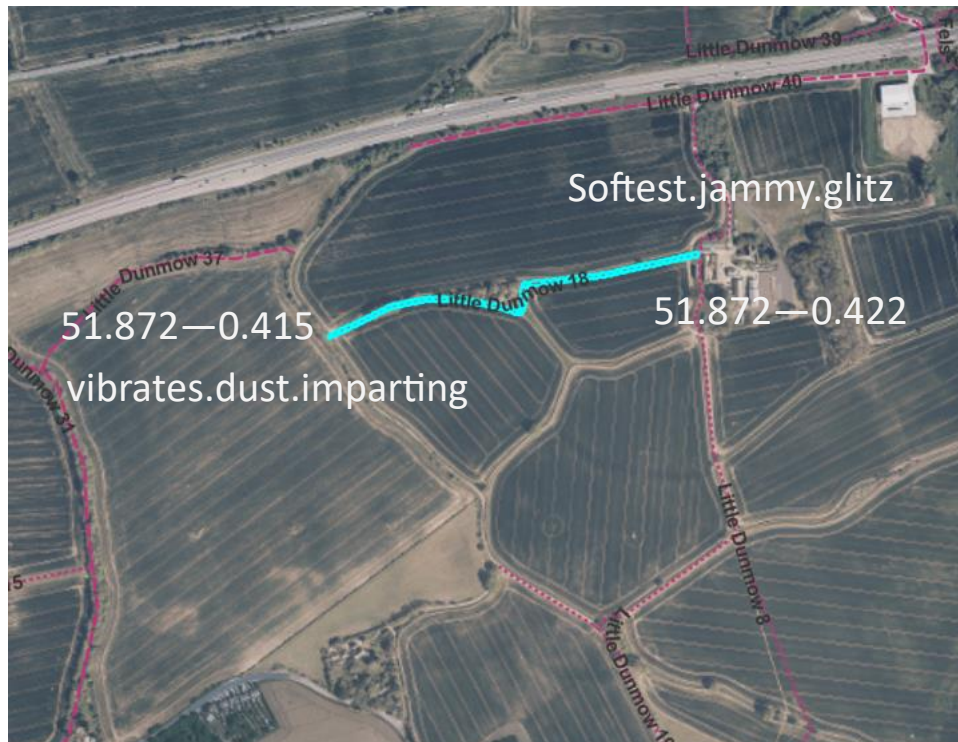
Condition Rating

This footpath is not well used as the building of the A120 dual carriageway has restricted its connectivity with routes to the North. Traffic noise from the A120 is very noticeable. Care has to be taken when crossing Station Road to gain access to the Western end.

Connectivity **2**, Popularity **1**, Accessibility **2**, Scenic Value **1**, Tranquility **3**, Wildlife **3**, Hazards **-3**

Total **9**

Little Dunmow footpath 18



Route

Starting on Bramble lane, this footpath heads East, following a hedgeline to its destination at Blatches Farm where it joins with FP8.

Key Features

The start of this footpath is half way along Bramble Lane a protected lane due to it's deep cuttings with mature hedgerows. It heads West over open countryside with good views of Blatches Farm and Stebbing Brook valley.

Condition Rating

Bramble Lane is now truncated by the building of the A120 dual carriageway and as a result is very overgrown. Otherwise the underfoot walking conditions are good. The proximity of the A120 causes traffic noise to spoil the tranquility. The hedgerows offer good habitat for birds, insects and small mammals.

Connectivity **2** , Popularity **2** , Accessibility **2** , Scenic Value **3** , Tranquility **2** , Wildlife **3** , Hazards **−1**

Total **13**

Little Dunmow footpath 19



Route

Heading North from LD 43 (The Flitch Way) the path passes between Bouchiers farmhouse and Bouchiers Farm. It continues North until turns right at a small copse, this is where LD 20 starts. Now heading west it joins with LD 8 on it's way to Blatches Farm.

Key Features

The start of this footpath offers good views of Felsted and the added interest of the historic Bouchiers Farmhouse. The remaining walk is through open countryside opening up to good views accross the Stebbing Brook valley.

Condition Rating

This Footpath offers a route to Stebbingford and Stebbing beyond. The narrow path between the Farmhouse and barn has protruding roots which can be a trip hazard, once past , the path follows a concrete road until it turns sharply East to follow a hedgeline until it meets with Foot Path 8. The underfoot conditions are usually good

Connectivity **4** , Popularity **3** , Accessibility **3** , Scenic Value **3** , Tranquility **3** , Wildlife **3** , Hazards **-1**

Total **18**

Little Dunmow footpath 20



Route

This footpath starts at the junction of Bramble Lane and Bouchiers Barn driveway. It continues along the driveway South East to join Footpath 19.

Key Features

This footpath starts from Bramble Lane which is a protected lane due to its deep cuttings and mature hedgerows. It then follows a hedgerow with views across field towards Flitch Green and Cromwell place.

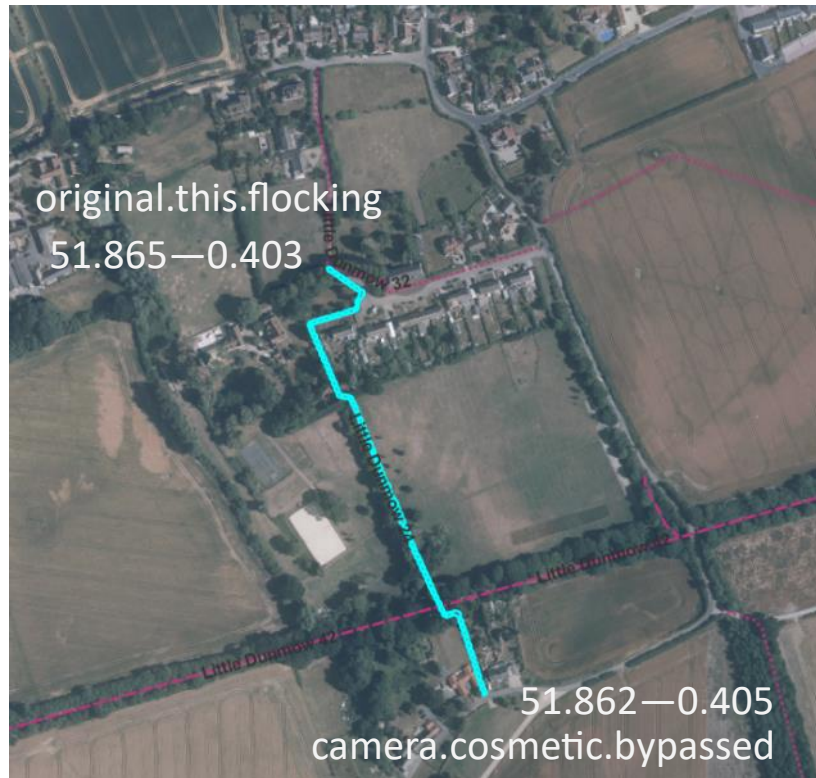
Condition Rating

This Footpath offers a route to Stebbingford and Stebbing beyond from Pound Hill. It's entire length is a concrete roadway which gives easy underfoot conditions in all weathers. The views are of recent developments.

Connectivity **2** , Popularity **1** , Accessibility **4** , Scenic Value **2** , Tranquility **4** , Wildlife **2** , Hazards **-0**

Total **15**

Little Dunmow footpath 24



Route

This footpath starts at the Junction of Grange Lane and St Mary's Place, adjacent to the Church. It heads South between the gardens to access the recreation ground. Here it keeps to the Eastern boundary and exits the recreation ground and crosses LP35, the Flitch Way. It continues South between gardens to emerge onto Brook Street.

Key Features

This footpath starts at the village's historic grade II listed church. Passes Priory place before crossing the recreation ground where a children's play area can be found. The Flitch Way, follows the route of a disused railway line, a long distance bridleway with National Park status. The picturesque settlement of Brook End picture book cottages with splendid views across the Chelmer Valley. This is a well used footpath, favoured by dog walkers looking to access the recreation ground and the Flitch Way.

Condition Rating

Beware, the access near the church has been moved to skirt the front garden of Priory Place and is not easily followed. This busy footpath but does tend to get overgrown as it passes between gardens and care should also be taken in wet weather as the path is very muddy near the Brook Street access point.

Connectivity **4** , Popularity **4** , Accessibility **3** , Scenic Value **5** , Tranquility **4** , Wildlife **3** , Hazards **-1**

Total **22**

Little Dunmow footpath 25



Route

This footpath is a little difficult to find, Head south out of Little Dunmow along Brook Street and over the Flitch way bridge, the road turns right sharply at the junction of Brook Street and the track to Baynards. A few yards along the track on the right the footpath starts. The path runs between trees the length of the adjacent field and then turns left and again runs through trees along the Northern edge of the next field. Leaving the trees the path follows the field perimeter towards Flitch Green where it heads South until crossing a ditch to join with FP Flitch Green 1.

Key Features

This path is not heavily used although does give a good route to Flitch Green and Felsted beyond. It also leads to one of the few crossing points for the river Chelmer and the chance to walk to Barnston. There are some excellent views across the Chelmer valley and good chances of seeing deer, hares and birds.

Condition Rating

The pathway becomes very muddy and difficult to use after persistent wet weather.

Connectivity **4** , Popularity **2** , Accessibility **3** , Scenic Value **4** , Tranquility **3** , Wildlife **3** , Hazards **-2**

Total **17**

Little Dunmow Bridleway 31



Route

Locally known as Clay lane. Starting from Station rd, the bridleway runs North through trees that form the field boundary. It would have once run through to the old A120 to give access to Stebbing Lane but this bridleway has since been diverted and runs West alongside the new A120 to meet Station rd at the run up to the flyover

Key Features

Because the A120 dual carriageway cut this bridleway, it has lost its relevance as a cross country route to Stebbing., although it does offer access to the wider footpath network which will take you to Stebbingford or Felsted.

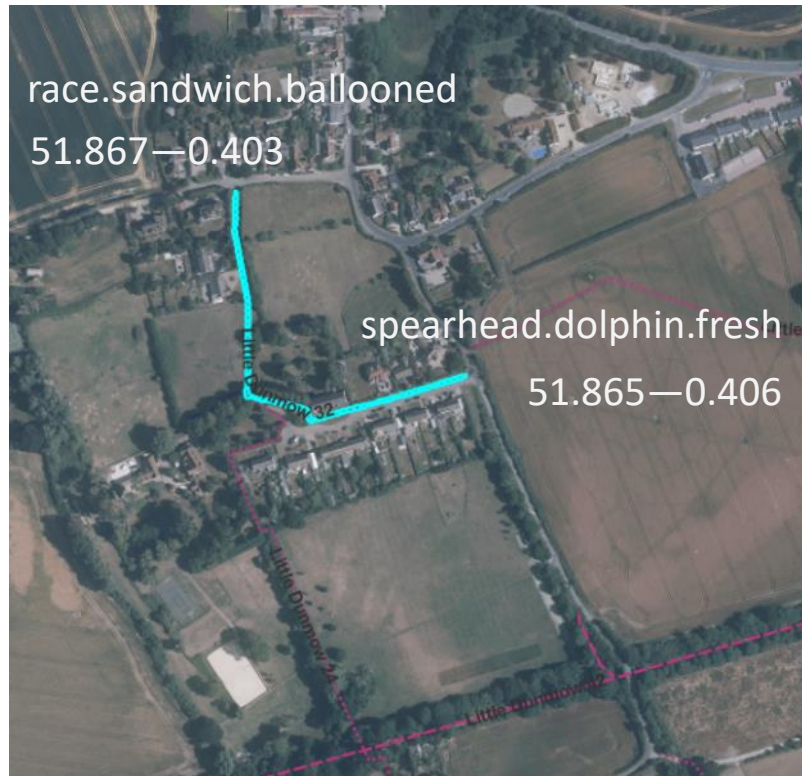
Condition Rating

Wet weather can make this Bridleway difficult to use. It's proximity to the A120 makes traffic noise a nuisance. The Southern access point is on Station Rd and fast moving traffic is a hazard.

Connectivity **2** , Popularity **2** , Accessibility **2** , Scenic Value **2** , Tranquility **2** , Wildlife **3** , Hazards **-2**

Total **11**

Little Dunmow Footpath 32



Route

This footpath starts at The Old Vicarage in Grange Lane and heads South towards Priory place, where it skirts the Churchyard of St Mary's Church. It then heads East along St Mary's place to the junction of Brook Street finishing opposite the access to footpath LD 10.

Key Features

A well used footpath as it gives access around the village, to the Church and Recreation ground. Popular with dog walkers and recreational walkers as it forms part of a 2.5 mile walk along a quiet lane and the Flitch Way. The footpath passes the historic St Mary's Church, Priory Place and offers good views of the central paddocks and surrounding countryside.

Condition Rating

This path has a good walking surface all year round.

Connectivity **4** , Popularity **3** , Accessibility **4** , Scenic Value **3** , Tranquility **3** , Wildlife **2** , Hazards **—0**

Total **19**

Little Dunmow Footpath 33



Route

The footpath starts on Stebbing lane opposite Throws Lane cottages and heads East over open fields. After approximately 500m the path turns 90 degrees and heads for its exit to the B1256.

Key Features

This is a rarely used footpath, again due to the construction of the A120 dual carriageway. It would originally linked up with Bramble lane as a route to Felsted. Some good views across the Stebbing Brook Valley

Condition Rating

As the path is rarely used and runs through a used arable field, it often has a poor surface and is difficult to find. The access points both involve roads with no pavements. Especially dangerous on the B1256.

Connectivity **0** , Popularity **0** , Accessibility **0** , Scenic Value **2** , Tranquility **3** , Wildlife **2** , Hazards **-5**

Total **2**

Little Dunmow Footpath 36



Route

At the Northern end of Homelye Chase is Homelye farm where this footpath starts. Heading East through the farmyard it skirts the farm ponds and heads North along the field boundary. At the corner of the field the path turns East and again follows the field boundary to a point where the boundary ends, turning North again the path continues to it's finishing point. Here the footpath becomes Great Dunmow 25, heading West into Tooleys Farm yard.

Key Features

This is a good cross country walk to Stebbing. It starts near one of the Parish Landmarks, the water tower which can be seen from as far away as Barnston. The approach to Stebbing once past Tooleys farmyard offers splendid views of Stebbing village and church from across the valley.

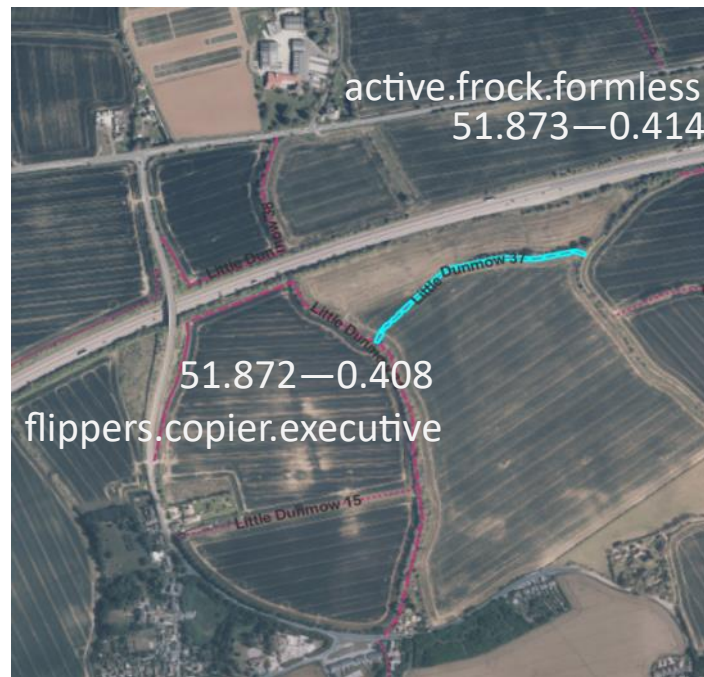
Condition Rating

In wet weather the final approaches to the junction with Tooleys farm track can be waterlogged and the further journey to Stebbing involves walking across a ploughed field. Beware the signage is poor.

Connectivity **3** , Popularity **2** , Accessibility **3** , Scenic Value **3** , Tranquility **4** , Wildlife **2** , Hazards **-2**

Total **15**

Little Dunmow Bridleway 37



Route

This bridleway joins Clay lane (LD31) and Bramble lane. Starting near the intersection of Clay lane with the New A120 dual carriageway it travels East over the brow of a hill before joining bramble lane.

Key Features

Not a very picturesque bridleway as it runs adjacent to the A120 dual Carriageway. Not well used but does offer a cross country route to Stebbingford and the footpath network beyond.

Condition Rating

Although this footpath crosses farmland, being on top of the hill the surface remains in reasonable condition. The Eastern entrance crosses a ditch and runs through a hedge which can be overgrown. Traffic noise from the A120 is a nuisance.

Connectivity **3** , Popularity **1**, Accessibility **3**, Scenic Value **2**, Tranquility **2**, Wildlife **2**, Hazards **-1**

Total **12**

Little Dunmow Bridleway 38



Route

This bridleway starts on Station rd on the North East side of the A120 flyover. It follows the bridge embankment as far as the dual Carriage-way where it turns East between the Arable field and the A120 embankment until reaching the original bridleway route (Clay Lane). Turning North it runs a short distance to the B1256 Braintree road opposite Stebbing road.

Key Features

Little used and not particularly picturesque this footpath does offer an alternative route to Stebbing road.

Condition Rating

Vegetation growth often makes this bridleway difficult to use. Traffic noise from the A120 is a nuisance. Access onto the B1256 has no pavement and fast moving traffic is a hazard.

Connectivity **1** , Popularity **1**, Accessibility **1**, Scenic Value **1**, Tranquility **1**, Wildlife **2**, Hazards **-4**

Total **3**

Little Dunmow Footpath 39



Route

The footpath starts on the B1256 in Stebbingford and follows it's original route South until it reaches the A120 dual carriageway where it turns East following the field boundary and the A120 embankment. It passes behind a private residence until it meets with Footpath LD 40 on the access route to Blatches farm.

Key Features

It would once have been a well used route to walk from the Flich Way to Stebbing, but road construction has made it's use more or less redundant. Sandwiched between two busy roads and not particularly long this can't be classed a scenic route.

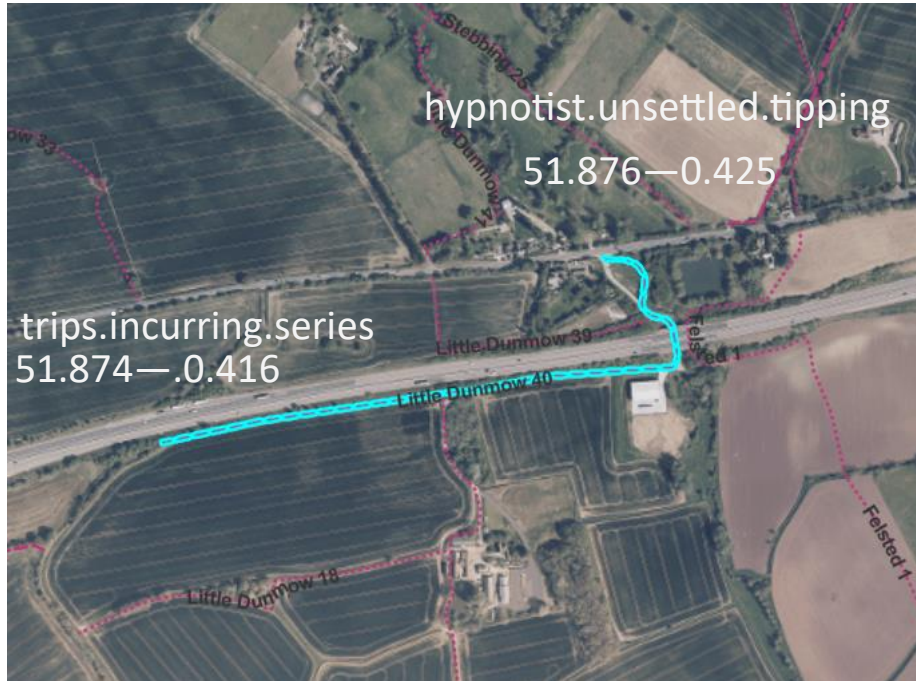
Condition Rating

Underuse means this footpath is often very overgrown as it passes behind the private residence. The section across the field will often have a poor surface. The B1256 exit is hazardous due to fast moving traffic and the traffic noise from the A120 is a disturbance.

Connectivity **0** , Popularity **0** , Accessibility **1** , Scenic Value **1** , Tranquility **1** , Wildlife **1** , Hazards **-4**

Total **0**

Little Dunmow Bridleway 40



Route

This bridleway starts at the northern end of Bramble lane where it has been truncated by the A120 dual carriageway. Running East along the A120 embankment it is joined by footpath LD 8. It continues along the Blatches farm access road before turning North and passing under the A 120. From here it follows the bank of Stebbing Brook until it's exit at the B1256 in Stebbingford.

Key Features

This footpath starts at the top of a hill which gives fine views over the Stebbing Brook Valley. It is well used as it offers an off road route between Little Dunmow, Felsted and Flitch Green and Stebbing. The final section is beside a riverbank. The scenery is marred by the A120 but on balance pleasurable.

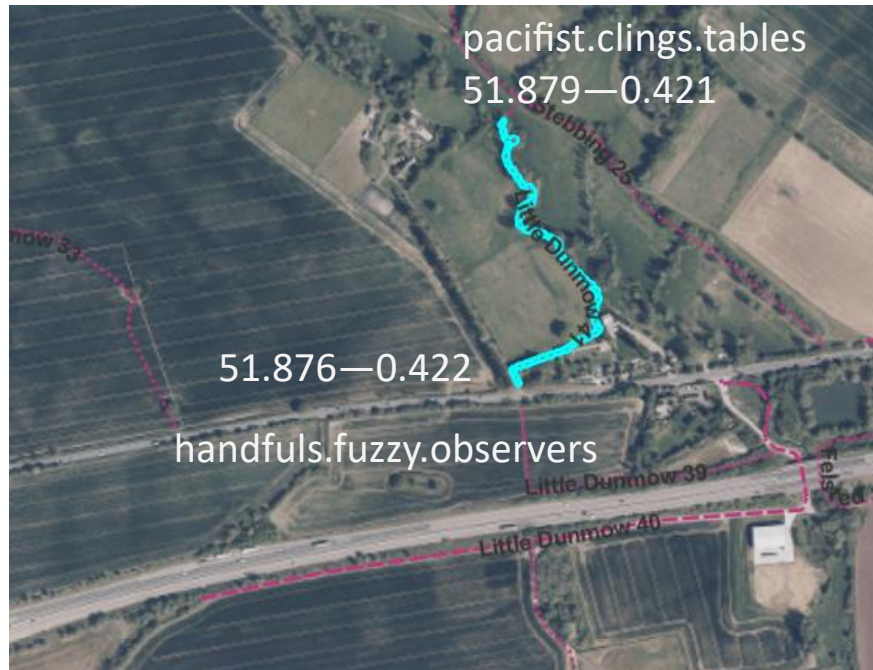
Condition Rating

Surfaces vary, The hilltop section is good open ground. The Blatches farm access road is a good concrete road surface used only rarely for Farm and crematorium access. The riverbank section tends to be overgrown and boggy but the farm access road is available as an alternative. The A120 does give unwanted traffic noise.

Connectivity **3** , Popularity **3** , Accessibility **3** , Scenic Value **3** , Tranquility **1** , Wildlife **2** , Hazards **-2**

Total **13**

Little Dunmow Footpath 41



Route

Starting on the Northern side of the B 1256 in Stebbingford alongside the driveway to Rookwoods, this footpath passes East ,behind the cottages, to the bank of Stebbing Brook. The path then follows the Western bank of the stream to a bridging point at the end of the adjacent meadow. Here the path leaves Little Dunmow Parish to link up with footpath Stebbing 26 and on to Stebbing 25 for a very picturesque walk to Stebbing.

Key Features

This footpath is a well used route to Stebbing and the footpath network beyond. It offers interesting views of the buildings in Stebbingford before heading along the Stebbing Brook with fine views of the surrounding countryside.

Condition Rating

Beware of fast moving traffic on the B1256 and care must be taken to follow the footpath signs as it passes close to the residential buildings. The surface has always been good but Stebbing Brook has been known to flood.

Connectivity **3** , Popularity **3** , Accessibility **2** , Scenic Value **4** , Tranquility **3** , Wildlife **3** , Hazards **-2**

Total **16**

Little Dunmow Bridleway 42

The Flitch Way



Route

This section of the Flitch way starts at a disused rail overbridge on footpath LD 5 where a ramp leads up the railway embankment to the old track bed. The bridleway heads East following the straight path of the disused railway. After a mile, footpath LD 24 crosses which will give access to Little Dunmow recreation ground and the village beyond. Another quarter of a mile will find the start of footpath LD 10 which gives access to the West of Little Dunmow village and the wider footpath network beyond. The footpath ends by running between a Traveler's site and a housing estate onto Gypsy lane where it joins with Station Road.

Key Features

Flitch way is a long distance path which runs from Hatfield Forest in the East to Braintree. It has been awarded National Park status and is maintained by Essex County Council. It is also part of the National Cycle route network. This section follows the old railway line through open countryside up the hill to Felsted Station. It offers splendid views across the Chelmer valley and through lovely wooded cuttings. The Western end passes the old Felsted Station building which unfortunately is in poor condition along with the surroundings which suffer from their proximity to the Traveler's site.

Condition Rating

The majority of the Flitch Way is well maintained with good surfaces for cycling and walking. In wet weather the Eastern end can be very muddy. The western end passes the travellers site in the old Felsted Station goods yard and loose dogs can be a hazard. To continue to the next section of the Flitch Way involves crossing Station road which has fast moving traffic.

Connectivity **5** , Popularity **4**, Accessibility **3**, Scenic Value **3**, Tranquility **3**, Wildlife **4**, Hazards **—4**

Total **18**

Little Dunmow Bridleway 43

The Flitch Way



Route

From the abutment on the Northern side of Station Rd, this section of the Flitch Way heads East through a leafy cutting. The view opens up to the South across the Stebbing Brook Valley showing Felsted village and historic public school. About half a mile from its start the Bridleway is crossed by footpath 19 near Bouchiers Farm an ancient farmstead. Three quarters of a mile from its start the track crosses Stebbing Brook and becomes Felsted 130 continuing it's straight pathway to Rayne and Braintree.

Key Features

This section of the Flitch way is well used as it gives good access to Felsted, Stebbing, Rayne and Braintree. The views across the Stebbing Brook Valley are well worth seeing. The old railway is the perfect green corridor habitat for wildlife.

Condition Rating

The surface is generally good but muddy in wet weather. Access from Station rd can be hazardous due to fast moving traffic.

Connectivity **5** , Popularity **5** , Accessibility **3** , Scenic Value **4** , Tranquility **4** , Wildlife **4** , Hazards **-2**

Total **23**